

HOUSE COCKTAILS

WHITE WINE

Big Grove Old Fashioned Buffalo Trace bourbon, orange simple syrup, Angostura, Peychaud's, and orange bitters, orange zest, Luxardo cherry | 12

Big Grove Manhattan Old Forester rye, Casals vermouth, Luxardo cherry | 13

Sazerac Old Forester rye, simple syrup, Peychaud's bitters, absinthe rinse, lemon twist | 13

Thyme of the Season Diplomatico Planas rum, Giffard apricot Liqueur, fresh lime juice, Thym thyme liqueur, fresh thyme, simple syrup | 12
substitute Ron Zacapa 23 year aged rum | add 2

Passionfruit Guava Paloma Union Uno Mezcal, Passoa passionfruit liqueur, guava syrup, grapefruit and lime juice | 12

Liquid Sunset Tito's vodka, Giffard Framboise raspberry liqueur, lemon juice, raspberry syrup, rhubarb bitters, club soda | 12

Patio Pounder Tanqueray gin, Giffard Piment D'Espelette chile liqueur, fresh lemon and lime juice and Thai Spice Bitters, topped with Eris Punx pineapple cider | 13

Sidecar Buffalo Trace bourbon, Royal Combier orange liqueur, fresh lemon juice, simple syrup, Peychaud's bitters, orange twist | 13

Italian Job Castle & Key Roots of Ruin gin, Aperol, fresh lemon juice, orange simple syrup, orange zest, rhubarb bitters, topped with sparkling wine | 12

Prickly Pear Margarita Corazon blanco tequila, Brovo orange curacao, prickly pear puree, fresh lime juice | 12
substitute Don Julio Blanco tequila | 2

Big Grove Mules choice of vodka or bourbon, topped with ginger lime syrup and ginger beer | 12

Pineapple Under the Sea Castle & Key Roots of Ruin gin and Four Pillars Bloody Shiraz sloe gin, pineapple juice, lemon juice, simple syrup, and tiki bitters, topped with sliced pineapple | 12

Salted Caramel Espresso Martini Diplomatico Riserva Exclusiva dark rum, Mr. Black's coffee liqueur, Buffalo Trace Bourbon Cream liqueur, salted caramel simple syrup, cold brew coffee | 14

COCKTAIL SPECIALS

Barrel Aged Aviator Peloton De La Muerte Mezcal, Combier creme de violette, Maraska maraschino liqueur, lemon and lime juice | 12

Barrel Strength Old Fashioned Knob Creek Private Single Barrel Bourbon, range simple syrup, Angostura, Peychaud's, and orange bitters, orange zest, Luxardo cherry | 15

Watermelon Margarita Corazon blanco tequila, Combier watermelon liqueur, Brovo orange liqueur, lime and watermelon juice | 14
substitute Don Julio Blanco tequila | 2
add a Union Uno mezcal float | 2

Zenato, Pinot Grigio Delle Venezie Italy 10 | 40

Villa Maria Earth Garden, Sauvignon Blanc Marlborough, New Zealand 12 | 44

Terre Brulee, Chenin Blanc Swartland, South Africa 11 | 40

Louis Moreau, Chablis Bourgogne Burgundy, France 15 | 55

Whispering Angel, Rose Provence, France 13 | 48

Felino, Chardonnay Mendoza, Argentina 11 | 40

SPARKLING WINE

Graham Beck, Sparkling Rose South Africa 10 | 40

Lini 910, Lambrusco Rosso Dry Sparkling Red Italy 11 | 40

Francois Montand, Brut France 10 | 40

Vietti, Moscato Piedmont, Italy 10/38

RED WINE

Columbia, Cabernet Sauvignon Columbia Valley, WA 10 | 36

Quilt, Cabernet Sauvignon Napa Valley, CA 16 | 58

Mont Redon, Cotes Du Rhone Rhone Valley, France 12 | 40

Girl and Dragon, Malbec Mendoza, Argentina 10 | 38

El Enemigo, Cabernet Franc Mendoza, Argentina 17 | 60

Renato Ratti, Nebbiolo Piedmont, Italy 13 | 48

Frank Family, Pinot Noir Carneros, CA 18 | 70

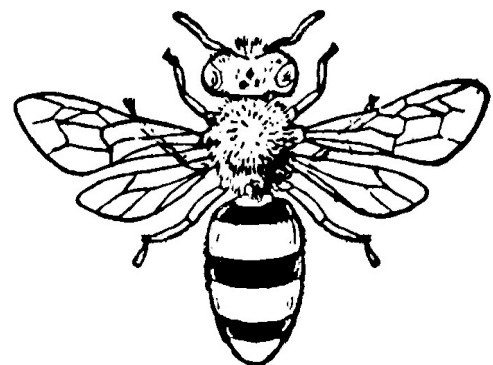
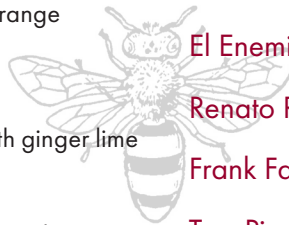
Tres Picos, Garnacha Campo de Borja, Spain 12 | 45

Inscription, Pinot Noir Willamette Valley, OR 12 | 40

WINE SPECIALS

Tooth and Nail "The Stand", Red Blend Paso Robles, CA 14 | 55

Forever Summer by Mirabeau, Rose Provence, France 10 | 38



DRAFT BEERS

All Drafts 16oz Unless Otherwise Noted

- 3 Floyds, Zombie Dust** Pale Ale 6.5% | 7
- Equilibrium, Sky Lab** Double IPA 8.5% | 9 (12oz)
- Evil Horse, Lug Wrench Lager** American Lager 4.2% | 6
- Tighthead, Chilly Water** American Pale Ale 4.8% | 6
- Stone, Delicious Hazy IPA** Hazy IPA 7.2% | 6
- Goose Island, 312** Wheat Ale 4.2% | 6
- Hopewell, Tankbeer** Czech Style Lager 4.4% | 6
- Urban Chestnut, Zwickel** Bavarian Style Lager 5.1% | 6
- Two Brothers, Cane and Ebel** Red Rye IPA 5.7% | 7

DRAFT CIDER

- Eris, Punx** Semi-sweet cider blended with pineapple, cherry, and a hint of vanilla 6.0% | 6

LOCAL SMALL BATCH KOMBUCHA ON DRAFT FROM CLOUD MOUNTAIN

- Ask your server about today's flavors | 6.5 (12oz)

ADULT SLUSHIES

\$7 Sunday Through Thursday - \$10 Friday-Saturday

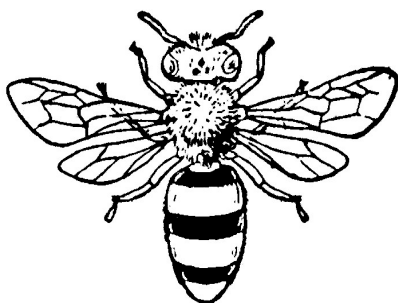
- Blackberry Ginger Margarita** Corazon Blanco tequila, blackberry puree, ginger lime syrup, Brovo orange curacao, lime juice

- Mint Julep** Kentucky whiskey, mint simple syrup, fresh lime juice, Angostura bitters

NON ALCOHOLIC COCKTAILS

- Peppered Pig** Seedlip Garden 108 herbal N/A spirit, Jack Rudy's tonic syrup, grapefruit juice, club soda, and black pepper | 6

- Zero Grove** Seedlip Grove 42 citrus N/A spirit, lemon juice, prickly pear syrup, club soda, lemon twist | 6



BEER BOTTLES & CANS

- Bud Light, Miller Lite, Coors Light** Light American Lager 16oz can 4.2% | 5
- Michelob Ultra** American Lager 12oz can, 4.2% | 5
- Stella Artois** Lager 11.2oz bottle, 5.0% | 5
- Blue Moon** Belgian Style Wheat Ale 16oz can, 5.4% | 6
- Half Acre, Space** American IPA 16oz can, 6.8% | 7.5
- Delirium Tremens, Brouwerij Huyghe** Belgian Pale Strong Ale 16oz can 8.5% | 11
- Stiegl, Radler** Lager with grapefruit juice, 16oz can 2.0% | 6
- Weihenstephaner, Hefeweizen** German wheat beer 11.2oz bottle, 5.4% | 6
- Modelo, Especial** Mexican Lager 12oz can, 4.4% | 6

CIDER

- Eris, Pedestrian** dry apple cider 12oz can 5.6% | 6
- Otto's, Hopped Apple CBD Cider** non-alcoholic cbd cider 12oz bottle 0.0% | 10
- Black Widow, Original Sin** blackberry and apple cider 12oz can 6.0% | 5

LAMBIC

- Lindemans, Peche** Peach Lambic 8.5oz bottle 2.5% | 9

HARD SELTZER

- High Noon** pineapple seltzer 12oz can 4.5% | 6

NON ALCOHOLIC BEER

- Big Drop, Pine Trail** Pale Ale style malt beverage, 12oz can | 5

KNOB CREEK PRIVATE SINGLE BARREL BOURBON

a collaboration between Blg Grove Tavern, Watson's, and PUNCH!

- 1.5 oz pour | 10.50

- 750 ML Bottle (take home only) | 69